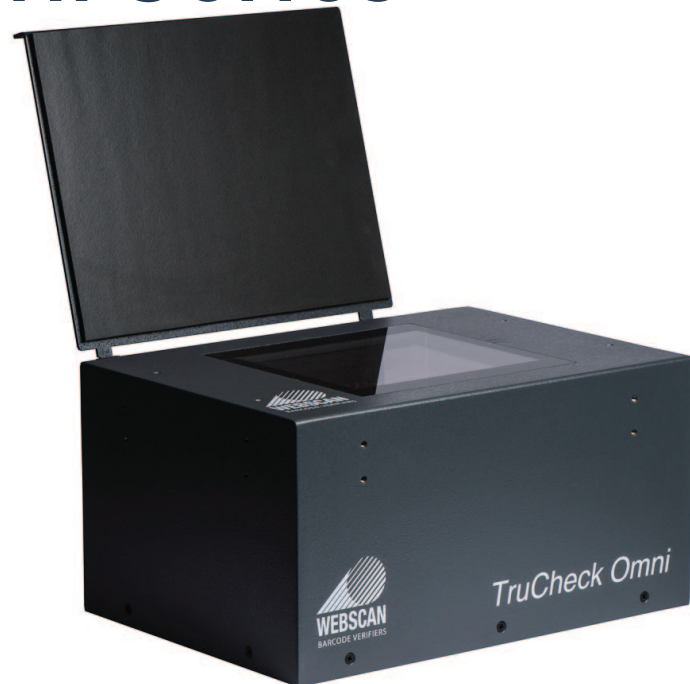


Webscan Omni Series

BAR CODE VERIFIER

BY 



Features

- Follows the ISO15416 and ISO15415 Bar Code Inspection Method
- Conforms to ISO15426 -1 and -2 Bar Code Verifier Specification
- Traceable to NIST (National Institute of Standards and Technology)
- Auto-discriminates between all popular symbologies
- Accurate display of the 'X' dimension/Magnification
- Automatic variable aperture size
- Multiple scan averaging
- Traditional analysis also provided
- USB connection
- Free lifetime software upgrades

Summary

The Omni bar code verifiers are desktop bar code verifiers where the bar code is placed face down on the top of the unit. The design ensures that the image is calibrated and in focus resulting in superior accuracy and repeatability.

Three models are available (different field of view):

- Omni XL - Field of view 5.91" x 4.41" with a min X dim of 14.0 mil
- Omni Wide Angle - Field of view 5.91" x 4.53" with a min X dim of 7.0 mil
- Omni HD - Field of view 3.94" x 2.95" with a min X dim of 6.0 mil

To inspect a bar code, simply place the code face down on the verifier and push the button. Grading is automatically performed and the results are quickly displayed on the screen with a graphical interface highlighting for operators where any potential problems exist.

The high level of accuracy and repeatability ensure compliance with healthcare and pharmaceutical demands.



BAR CODE VERIFIER BY Webscan

Webscan Omni Series

Webscan Products

Features

Simple image/bar code capture	Y
ISO/ANSI scan profile test method	Y
Instant "On-Screen" ISO/ANSI Grade	Y
ISO/ANSI 10-scan averaging	Y
Traditional Test Method	Y
Extensive troubleshooting and printing optimization software	Y
Full Pharmaceutical reporting	Y
Dimensional measurement reporting	Y
Supports network database storage	Y
Auto-switch Symbologies (linear and 2D)	Y
Automatic variable aperture	Y
Detailed color hardcopy printout	Y

Verification Methods

Parameters determined by ISO/ANSI bar code print quality guidelines and traditional pass/fail criteria.

	Omni
ISO	Y
ANSI	Y
Traditional	Y
Bar/Space Measurements	Y
Industry Applications:	
GS1 General Specifications	Y
MIL-STD-130M (L through N)	Y
AS9132-A /AIM DPM (only 45Q)	Y
ISO/IEC 16022	Y
ISO/IEC 18004	Y
ISO/IEC 16023	Y
ISO/IEC 24778	Y
ISO/IEC 15415/15416	Y
AIQG AS9132	Y

Dimensions

Height:	197 mm (7.75")
Width:	371 mm (14.625")
Depth:	270 mm (10.625")

Mechanical

Weight:	5.5 kg (12.0 lbs)
Power:	100 to 240 VAC
Case:	Custom
Display:	Customer Supplied PC Computer
Keyboard:	Customer Supplied PC Keyboard

Environmental

Operating Temperature:	32 to 104° F (0 to 40° C)
Storage Temperature:	32 to 104° F (0 to 40° C)
Relative Humidity:	5% to 95% (non-condensing)

Optical:

Test Aperture:	3, 4, 5, 6, 10, 20 mil, and Variable
Wavelegth:	660nm (Red) Narrow Band LED
Resolution:	Wide Angle and HD have 5MP camera

Symbologies:

EAN/UPC with addenda, Code 39, ITF (I 2 of 5), GS1-128, Aztec Code, Code 128, Codabar, Code 93, GS1 DataBar Omnidirectional, GS1 DataBar Stacked Omnidirectional, GS1 DataBar Limited, GS1 DataBar Expanded, GS1 DataBar Truncated, GS1 DataBar Stacked, GS1 DataBar Expanded Stacked, PDF 417, MSI Plessey, MicroPDF 417, Composite Code CC-A/CC-B/CC-C, DataMatrix (ECC-200), QR Code, Micro QR Code

Safety/Regulatory:

93/68/EEC CE marking directive, 89/336/EEC EMC directive, 73/23/EEC Low voltage directive, EN 60950 Electrical safety, EN 55022 B EMC / Radio disturbances, EN 50082-1 EMC / Immunity



Optima Plus
P/N: WEB-Optima-Plus



Webscan Rover Wide Angle
P/N: WEB-Rover-WA

